



# Chelsea and Mill Creek Restoration Project

By Khoa Tran  
EEOS Capstone 476  
Prof. A. Frankic  
May 23, 2011

---

# Special thanks...

- Before starting the presentation, we would like to say thanks to the people that had contributed in helping us while working on this project including Professor Anamarija Frankic, students of EEOS Capstone of Spring 2011 at UMB, residents and local businesses owners of Chelsea, Rafael Mares, and many others.

# Objective and Outline

- Objective: To improve Chelsea and Mill Creek water quality in order to be beneficial for the communities of Chelsea by becoming environmental, recreational, and economic assets for the local area.
- Outline: Essentially, this presentation is made to represent our proposal to meet the objective through talking about the general background of Chelsea and Mill Creek, and explain in small and the main details about proposal that was made within fifteen minutes.

# Background

- The Creeks are located alongside Chelsea River
- Areas are owned by Department of Conservation and Recreation (DCR)
- The area is considered to be the second most polluted area in the Commonwealth (waterway)
- Situated between residential area and an industrial area and along of a major route which many industrial businesses are located there
- Highly polluted through various means such as littering and storm water run off including point and non-point sources of pollution
- Jet fuels for Logan Airport, 70-80 percent of the region heating oil and road salt



0 0.125 0.25 0.5 Miles

### Fuel Terminals Along Chelsea Creek, Massachusetts

- ▲ Active Facility
- ▲ Inactive Facility

Data Sources:  
 Oil storage facilities from EPA.  
 Roads from GDT at 1:24,000.  
 Town boundaries from MassGIS at 1:24,000.  
 Digital Orthoquads from MassGIS, 2001.  
 L:\projects\mpdes\chelsea2\chelsea.mxd  
 4 October 2004

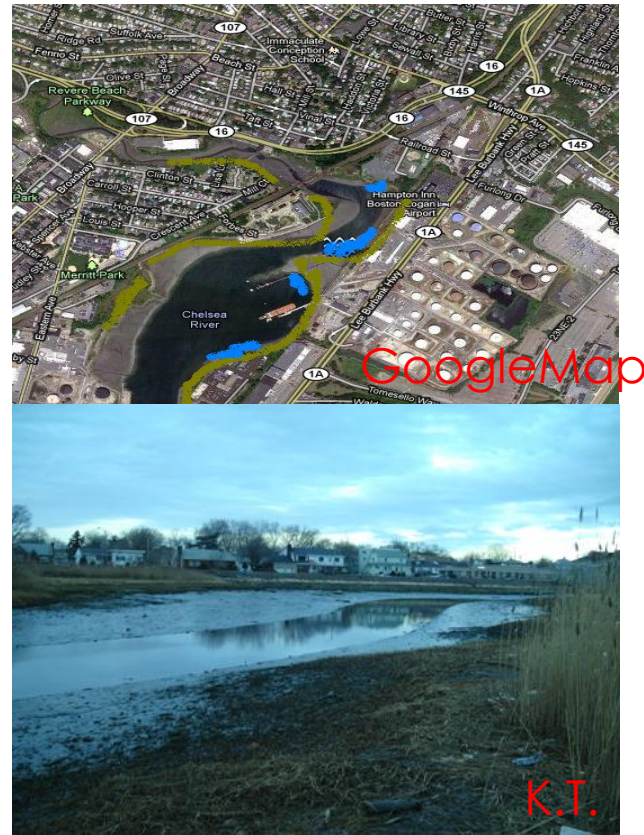


# Proposal

- 1. Improve the water quality and area located throughout the Chelsea River
- 2. Control and have better storm-water management
- 3. More recreational uses throughout the area
- 4. Make the area distinguishable and at least different from Revere Beach
- 5. Promote the area

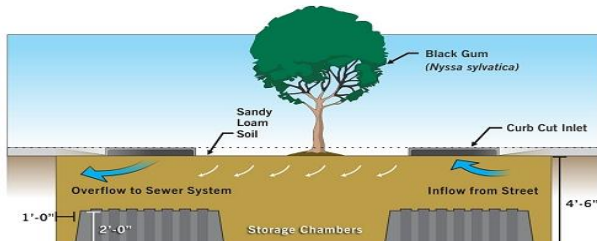
# Improve the Water Quality and Area

- Reintroduce salt marshes and oysters along side some parts of Chelsea
- Have monitor sites located at multiple sites
- Find other reasons why the water is polluted
- TRASH AND RECYCLE BINS

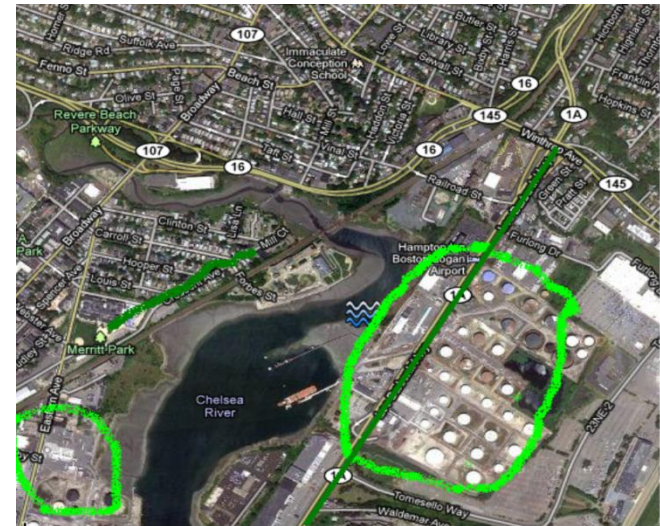


# Control and have better storm-water management

- Eco-friendly storm water management techniques such as tree-pits, rain garden, and green roofs



[http://www.nyc.gov/html/dep/html/stormwater/green\\_pilot\\_project\\_jbay\\_treeswale.shtml](http://www.nyc.gov/html/dep/html/stormwater/green_pilot_project_jbay_treeswale.shtml)



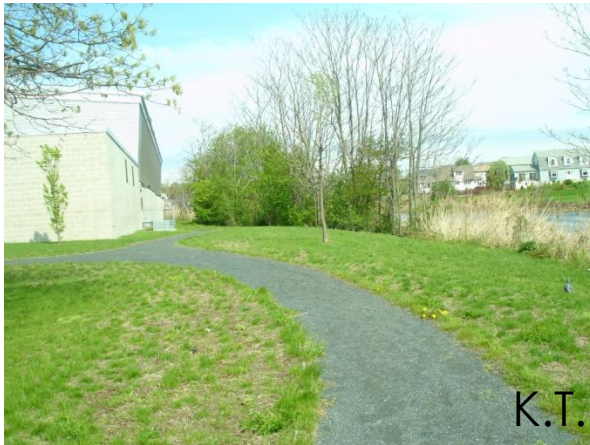
Google Map

K.T.



# More recreational uses throughout the area

- Picnic areas, parks, buildings for education and recreational uses.
- Use the unused railroad track for recreational and education purposes



# Make the area distinguishable and different from Revere Beach

- Cultural Center
- Historical Center
- Educational Purposes
- Walkway- Celebrate the Communities and Areas; Special Events
- Shopping Areas



K.T.

# Promote the Area

- Volunteers, tell others the importance of keeping the area clean.
- Fines
- Monitor!
- Attractions



K.T



K.T

# References

- <http://massoyster.org/learn.html>
- [http://urbaneco.org/dev/Chelsea\\_partnership.asp](http://urbaneco.org/dev/Chelsea_partnership.asp)
- <http://www.epa.gov/osp/presentations/envjust/bongiovanni.pdf>
- <http://www.epa.gov/ne/npdes/chelseacreekuelfterminals/>
- <http://www.chelseacollab.org/program>
- <http://www.mass.gov/?pageID=mg2localgovccpage&L=1&L0=home&L1=Resident&sid=massgov2&selectCity=Chelsea>
- [http://www.ci.chelsea.ma.us/public\\_documents/chelseama\\_dpw/stormwater](http://www.ci.chelsea.ma.us/public_documents/chelseama_dpw/stormwater)
- [http://www.crwa.org/projects/mystic\\_collab.html](http://www.crwa.org/projects/mystic_collab.html)
- [http://www.mass.gov/?pageID=eoeepressrelease&L=1&L0=Home&sid=Eoeepressrelease&f=100611\\_pr\\_mystic&csid=Eoeepressrelease](http://www.mass.gov/?pageID=eoeepressrelease&L=1&L0=Home&sid=Eoeepressrelease&f=100611_pr_mystic&csid=Eoeepressrelease)
- <http://mysticriver.org/faqs/>
- <http://www.noahcdc.org/cbe/ccrp.html>
- [http://www.universalhub.com/2010/conservation-group-sues-boston-over-storm-runoff-1](http://www.universalhub.com/2010/conservation-group-sues-boston-over-storm-runoff/)
- [http://www.epa.gov/boston/npdes/chelseacreekuelfterminals/pdfs/misc/AllFacility\\_RESP2Comments.pdf](http://www.epa.gov/boston/npdes/chelseacreekuelfterminals/pdfs/misc/AllFacility_RESP2Comments.pdf)
- <http://www.americanrivers.org/our-work/water-supply/storage-flows/>
- <http://www.nrdc.org/water/pollution/gsteps.asp>
- <http://www.americanrivers.org/our-work/clean-water/sewage-and-stormwater/stormwater-runoff.html>

# Conclusion (and other information)

- Funding from Patrick-Murray administration, fines like from Exxon-Mobil, EPA, and other sources
- Check the full version of PPT and Report online at course websites
- Any questions?
- (Don't be afraid to email at [khoa.tran002@umb.edu](mailto:khoa.tran002@umb.edu))
- By being able to improve the area and the water quality, the area will become more environmental friendly, thus, would improve public health and attract other species. Also, this will in turn attract more people to use the area for recreational and educational purposes. Eventually, this will encourage both major and local businesses to be located there.